



NCI CRCHD Career Development and Scientific Workshop

| CENTER TO REDUCE
| CANCER HEALTH DISPARITIES

Welcome!

We're glad you're here! Thank you for participating on behalf of NCI's Center to Reduce Cancer Health Disparities Program (CRCHD).

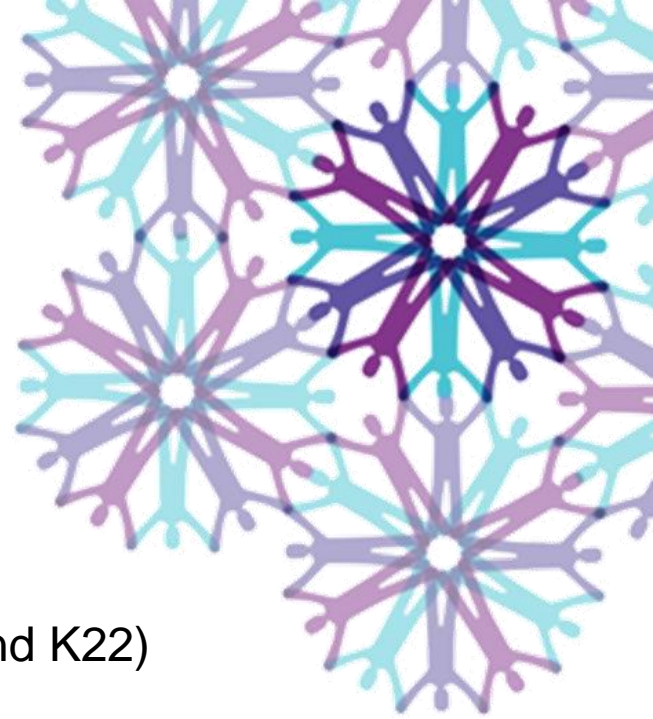


Goals of our workshop are:

- To provide practical guidance and grant writing tips to develop a highly competitive application.
- To increase awareness of CRCHD and NIH career development and grant writing resources.
- Provide an opportunity to network with CRCHD Program directors and your colleagues.

Workshop Agenda

- Plenary Session (Morning)
 - Welcome and Icebreaker Session
 - CURE Overview
- Application Guidance and Tips
 - CURE F31 Predoctoral Fellowship
 - CURE K Career Development Award (K01, K08 and K22)
- Plenary Session (Afternoon)
 - Grant Review Process
 - NCI/CRCHD Resources and Networks
 - Panel Discussion



Thank You to All!

External Speakers:

- Karyl B. Swartz, PhD, Center for Scientific Review, NIH
- Rafael E. Luna, PhD National Research Mentoring Network (NMRN)

Special Acknowledgements:

- Robert I. Fisher, MD, Fox Chase CC -Temple University
- Grace X. Ma, PhD, Fox Chase CC -Temple University

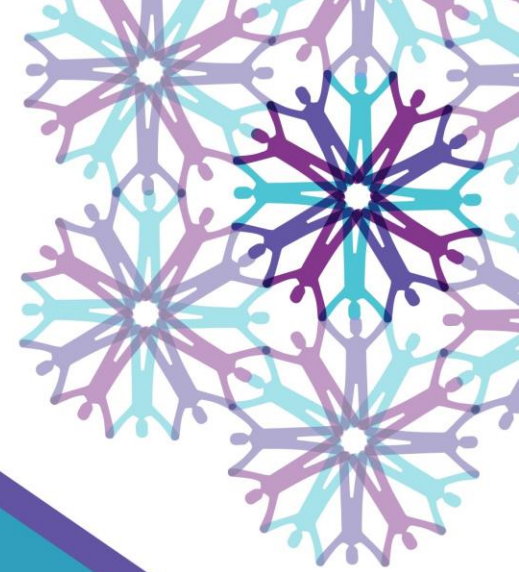
GMaP Regional Coordinators:

- Linda Fleisher, PhD, MPH
- Carrie Norbeck, MPH, CHES

NOVA Staff: Michelle Murray, CMP, CVEP

Philadelphia Working Group:

- CRCHD Program Staff:
 - Jessica Ceruto, MPH, CHES
 - Victoria Coan
 - Davyd Chung, PhD
 - Behrouz Davani, PhD
 - Hana Odeh, PhD
 - Peter Ogunbiyi, DVM, PhD
 - John Ojeifo, MD, PhD, MBA
 - Nicole McNeil Ford, PhD
 - Abigail Soyombo, PhD, MBA
 - Mary Ann Van Duyn, PhD, MPH
 - Anil Wali, PhD



**NATIONAL
CANCER
INSTITUTE**

cancer.gov/crchd



Getting to Know Your Cohort

Icebreaker and Introductions

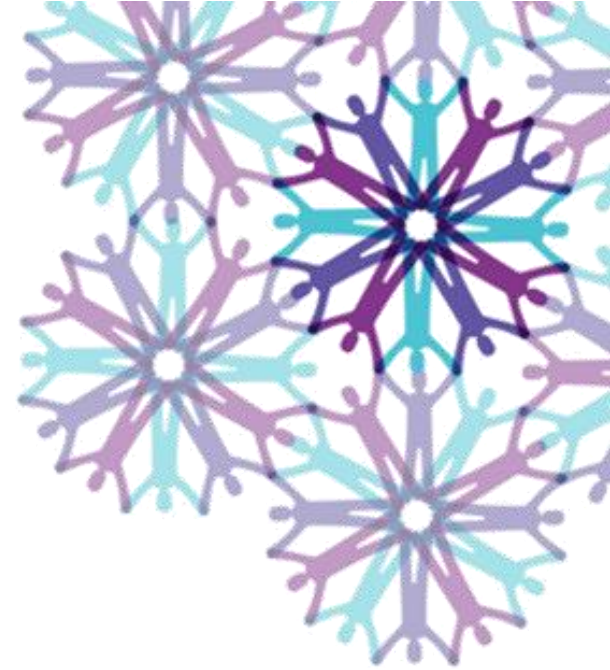
| CENTER TO REDUCE
CANCER HEALTH DISPARITIES

Davyd W. Chung, PhD

Networking: Research Elevator Pitch

- Name and Institution
- Favorite vacation spot
- 30 second Pitch about your research*
 - Purpose is to get someone interested; not to tell them everything there is to know. Make sure you:
 1. Define the problem
 2. Explain why it matters (broader benefits)
 3. Describe your potential solution(s)

* *No jargon allowed*



My Elevator Pitch

1. Define the Problem

- Researchers are notorious for using jargon or becoming so bogged down in the details of their research and losing sight of the big picture

2. Why it matters

- Researchers may need to summarize their work briefly while interviewing for a position, asking for funding/money, or finding a potential collaborator at a conference
- Researchers may explain their research to all audiences in the same way as they would to a lab colleague — the reviewers of your grant application will most likely not be from your lab


3. Potential Solution

- Identify your audience and write to your audience



**NATIONAL
CANCER
INSTITUTE**

cancer.gov/crchd



Introduction to NIH and Overview of the CURE Program

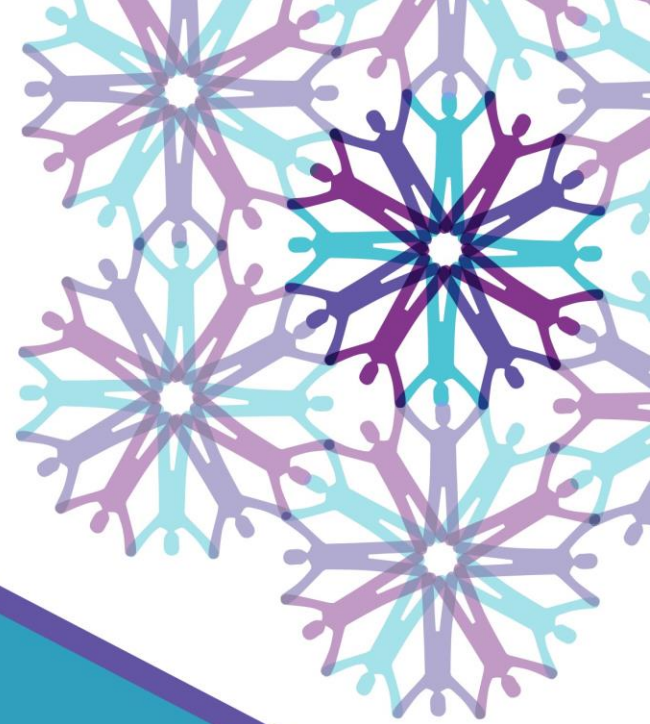
| CENTER TO REDUCE
CANCER HEALTH DISPARITIES

Peter Ogunbiyi, DVM, PhD

A decorative graphic consisting of a dark blue triangle on the left side of the slide, with a lighter blue diagonal line extending from the top-left corner towards the center.

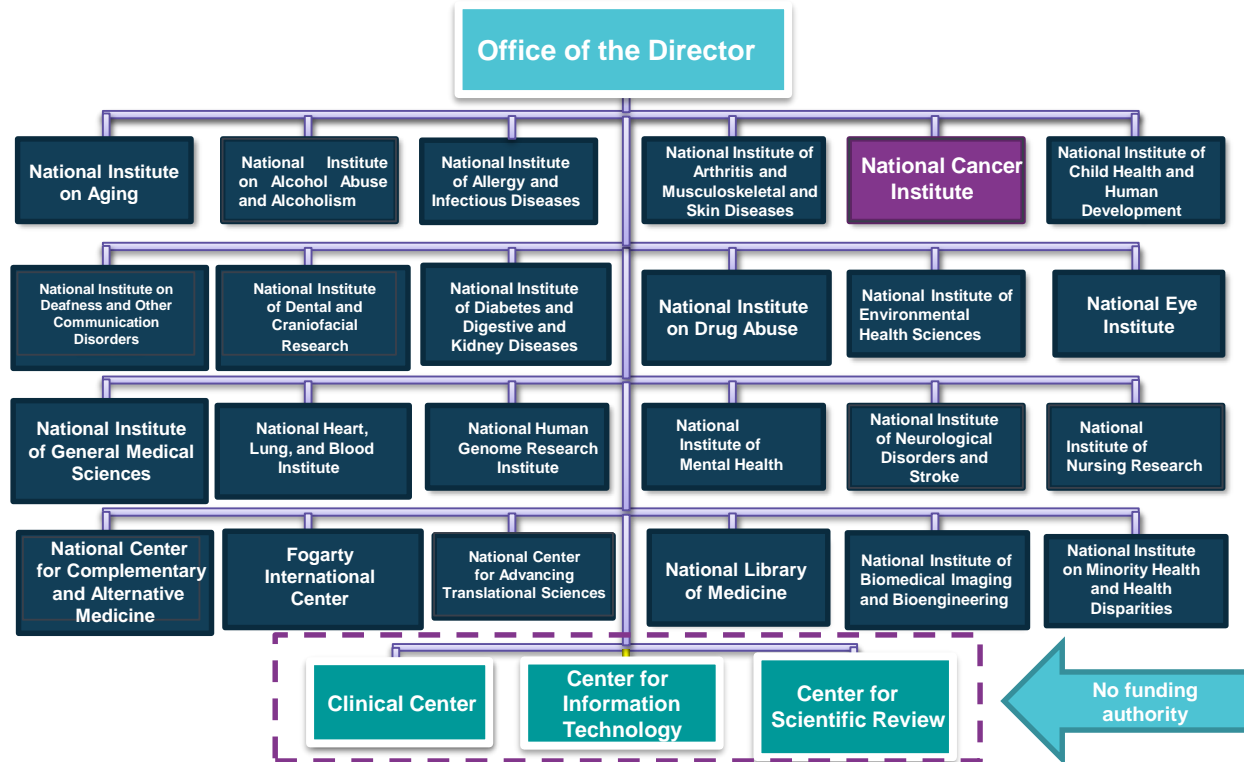
Outline

1. *NIH and the Grant Process*
2. *Overview of NCI Center to Reduce Cancer Health Disparities (CRCHD)*
3. *The Continuing Umbrella of Research Experiences (CURE) Program*



NIH and the Grant Process

NIH – 27 Institutes and Centers



Different Missions, Responsibilities and Constituencies

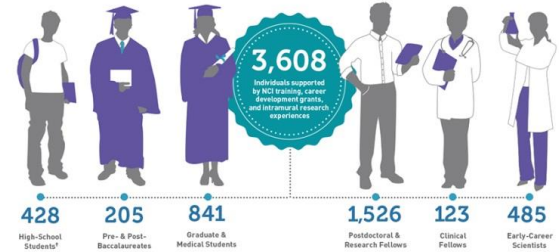


WHAT WE DO



TRAINING THE WORKFORCE

In FY 2014, NCI supported 3,608 emerging cancer researchers through training and career development grants and intramural research experiences.**

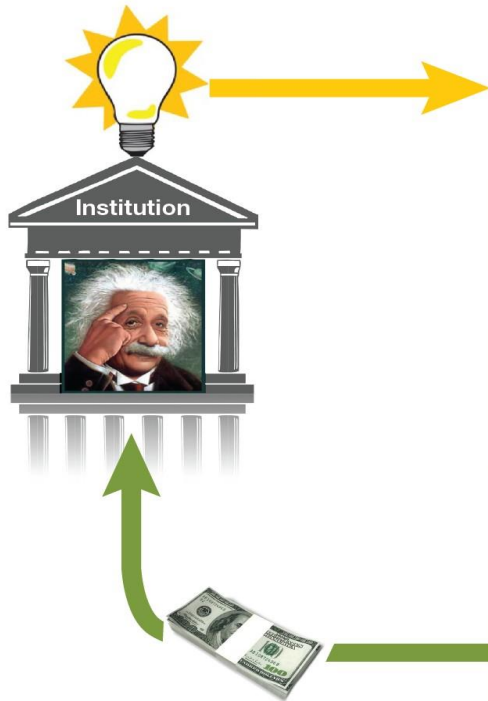


** Numbers do not include students and postdoctoral fellows supported by NCI research project grants, cancer center grants, and other non-training mechanisms
* Does not distinguish between summer research experiences and part- or full-time appointments

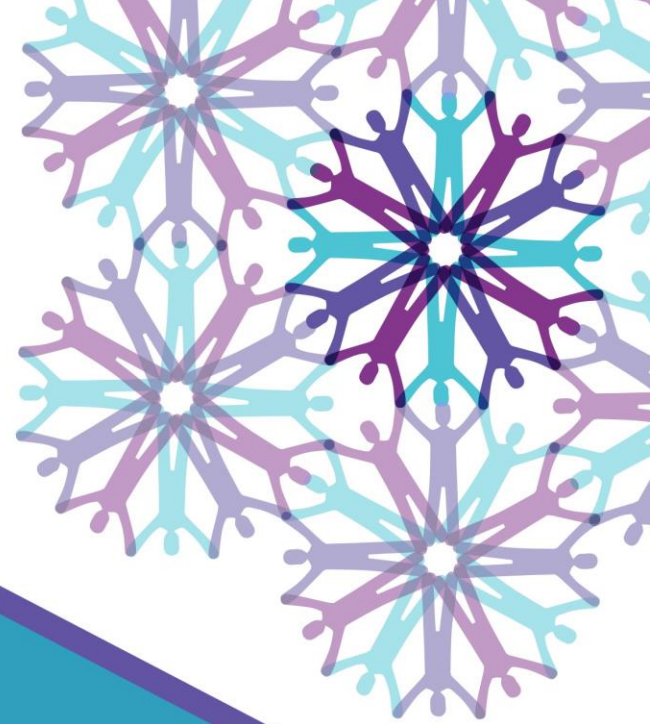
SCOPE OF OUR WORK



Know the Path of a Successful Application



Overview of NCI Center to Reduce Cancer Health Disparities (CRCHD)



NCI Center to Reduce Cancer Health Disparities (CRCHD)

- Leads NCI's efforts to **increase workforce diversity**
- Strengthens the NCI cancer research portfolio to **address cancer health disparities**
- **Builds regional networks** to:
 - foster collaboration
 - enhance capacity in cancer research and training, and
 - disseminate cancer information to underserved communities.
- **Advises NCI leadership** on strategic priorities, program direction

How CRCHD Achieves Its Mission...

Training – CURE

3,041+ CURE Scholars

Training and career development opportunities to enhance diversity in cancer and cancer health disparities research



Forming Partnerships – PACHE

24 Partnerships (13 U54 – 11 P20)

Multidisciplinary research projects in cancer and CHD training, outreach, education

Institutions Serving
Underserved
Communities



NCI-Designated
Cancer Centers

Comprehensive Partnership Grant (U54)
Feasibility Studies (P20)

Spawning CHD Research

R21/R01 Basic CHD Research

Cancer Models

P01/SPORE Development Workshop

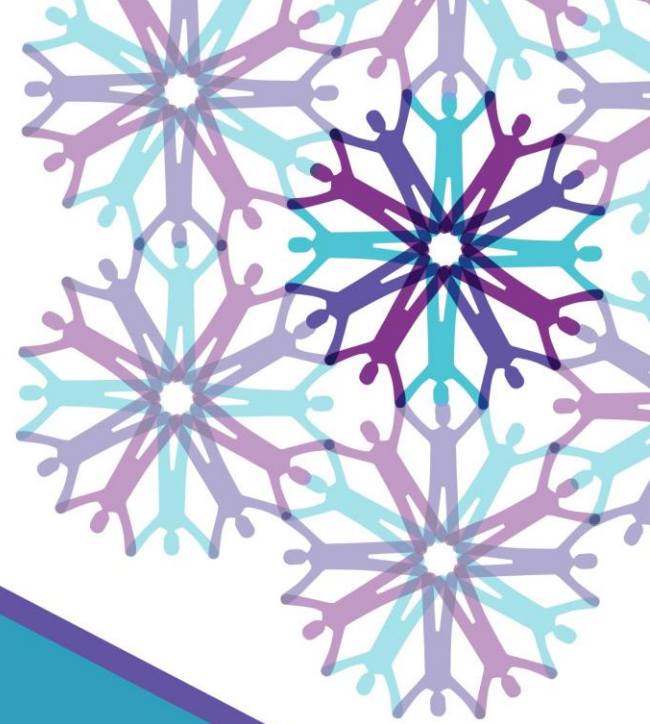


Networks for Research, Training & Outreach – GMaP and NON

6 GMaP Regions

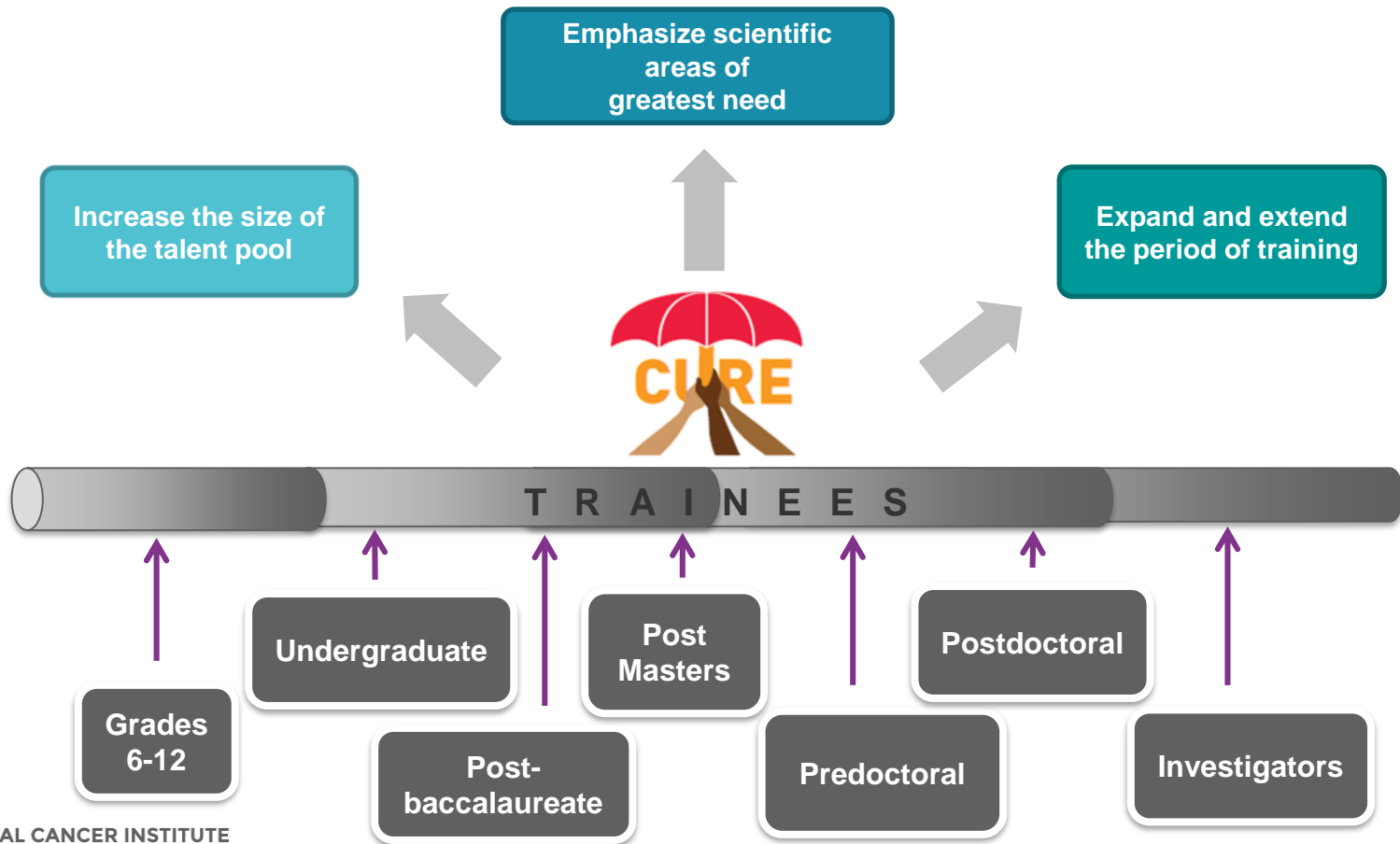
37 NON Cancer Centers with CHEs





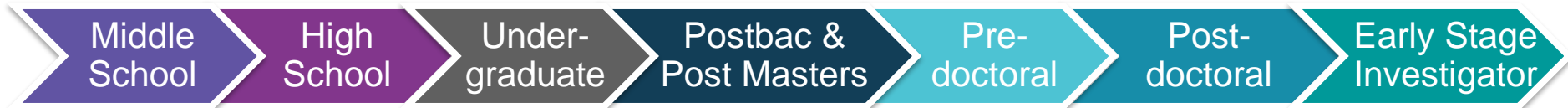
The Continuing Umbrella of Research Experiences (CURE) Program

Continuing Umbrella of Research Experiences (CURE)



Who is Eligible for the CURE Program?

Academic/Career Level of Trainee:



Diversity of Trainee:

Individuals of
Different
Race/Ethnicity

Individuals with
Disability

Individuals from
Disadvantaged
Background

US Citizens or Permanent Residents

CURE Funding Opportunities are Vehicles to Career Independence



F31
Identify appropriate mentors, learn how to navigate scientific organizations, graduate

R21
Acquire data and submit R01, collaborate and explore job opportunities

Goal
Scientific Independence & Self-Sustainability

K Awards
Develop scientific niche, acquire data, write R01 and explore job opportunities

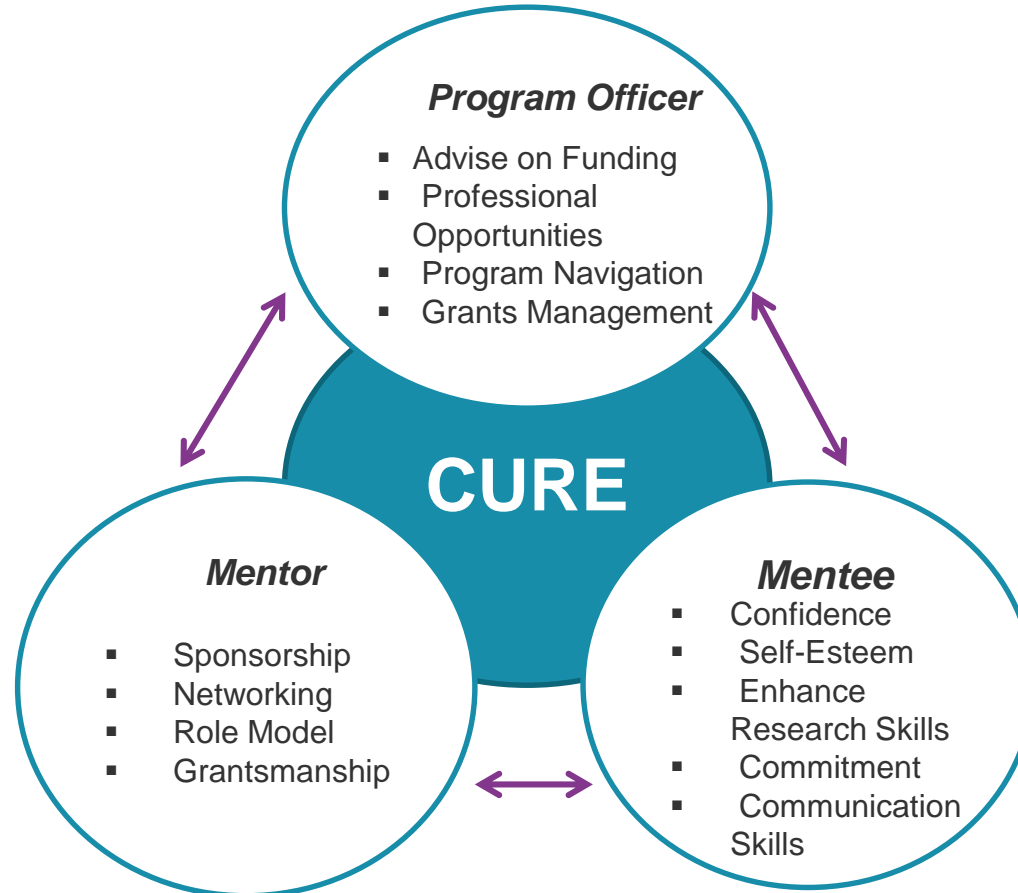
Supplements
Available at all career stages



- Acquire research skills
- Publish
- Write grants
- Network
- Present your scientific data

Work with your Program Officer!!

Uniqueness of the CURE Program



CURE Provides Support for Trainees through Navigation and Networks

Training Navigation

- Education about CURE funding opportunities
- Connection to CURE PDs and GMaP
- Support for career development

Program Director (PD)

- Advise and support
- Monitor of career progress

GMaP Network

- 7 region network
- Identifies potential trainees
- Strengthens research infrastructure and collaborations
- Enhances outreach

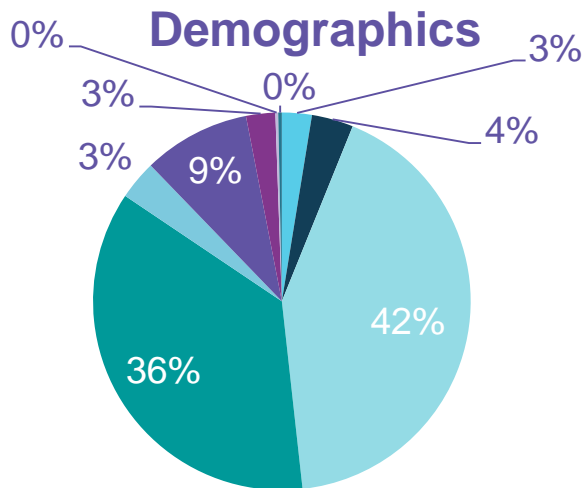


Mentor

Mentee

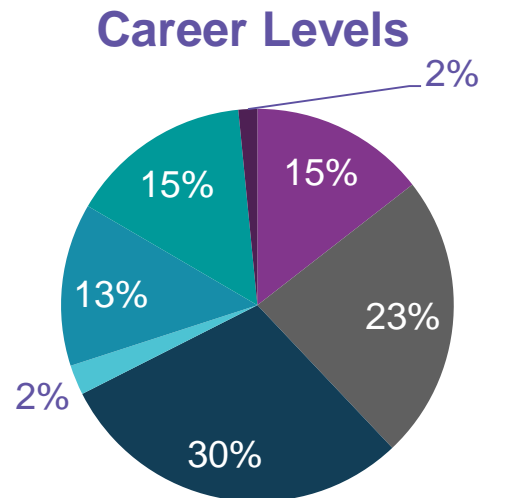
CURE Trainees

(2001–2015)



- American Indian or Alaskan
- Asian
- Black or African American
- Hispanic or Latino

n = 3,281



- High School
- Undergraduate
- Graduate
- Post-Bac/Post-Masters
- Postdoc
- Investigators
- Unknown

n = 3,281

Where are our CURE Scholars now?

**National Cancer
Advisory Board**



Chanita Hughes-Halbert

*Co-Director, Cancer Prevention &
Control Program*

Professor and Chair

**Senior Vice President
of Clinical Research**



Associate Professor



Eduardo
Sotomayor

Assistant Professor



Thais Salazar-Mather

Director,
Medical Oncology
Health Science Administrator

A large blue diagonal graphic element on the left side of the slide, consisting of a solid blue triangle and a lighter blue border.

CURE Session

1. *Predoctoral Students (F31)*
2. *Postdoctoral Fellows and New Investigators (K awards)*

Ruth L. Kirschstein NRSA Individual Predoctoral Fellowship to Promote Diversity in Health-Related Research (F31)

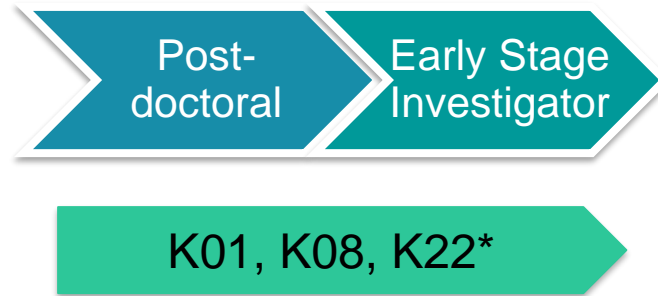


FOA (PAR-16-308): <https://grants.nih.gov/grants/guide/pa-files/PA-16-308.html>

Application receipt: Dec. 8, April 8, and August 8



Career Development (K) Awards to Promote Diversity



**Investigators in faculty positions are not eligible*

K Award Mechanisms

Due dates: February 12, June 12, October 12

K Type	Mentored or Non-Mentored	Research Focus	Max Salary	Max R&D Support	Duration
K01	Mentored	All	\$100k	\$30k	3-5 years
K22	Non-Mentored			\$50k	3 years
 K08	Mentored	Clinical, Translational & Patient-Oriented Research	\$185k	\$50k	3-5 years

NCI CURE Program Staff Contacts

Mechanism	PD Contact
Diversity and Re-entry Supplements	Drs. Alison Lin and Elena Schwartz
F31 Diversity	Dr. Nicole E. McNeil Ford
K01, K08, K22	Drs. John Ojeifo and Abigail Soyombo
R21 Diversity	Dr. Abigail Soyombo
R25 Research Education Grants	Dr. Alison Lin (R25 YES) Dr. Davyd Chung (R25 Research Experiences and R25 Courses for Skills Development)
Program Analyst	Rita LaPointe

<http://crchd.cancer.gov>

Stay Connected



@ncicrchd



NCI Center to Reduce Cancer Health Disparities (CRCHD)



crchd.cancer.gov



Contact your NCI Program Directors and GMaP Regional Coordinating Director



**NATIONAL
CANCER
INSTITUTE**

cancer.gov/crchd